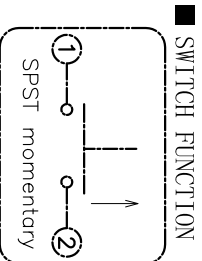
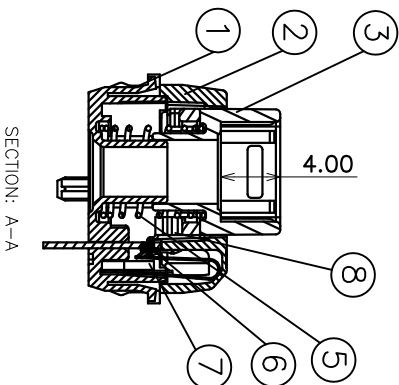
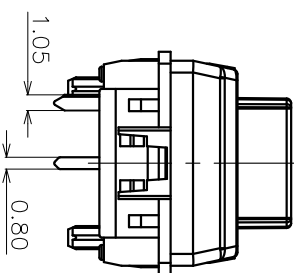
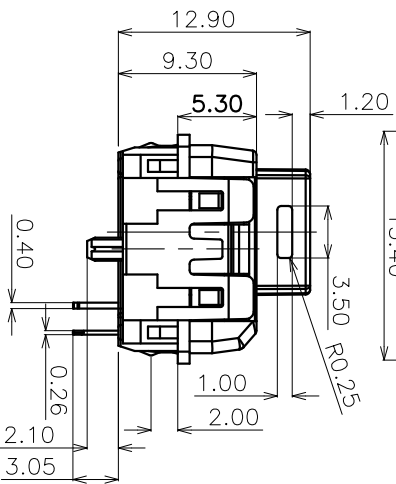
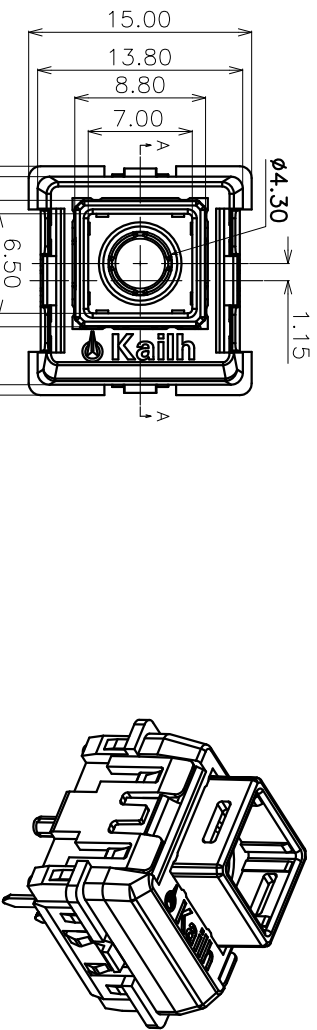
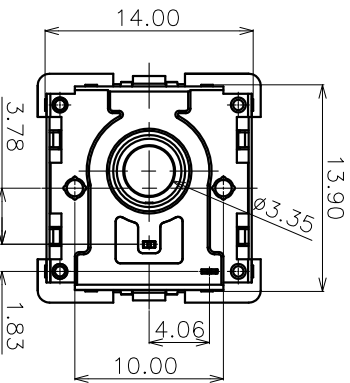
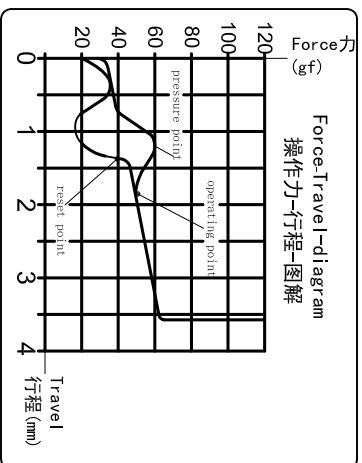


ABIDE BY ROHS



- Specification :
- 1. Rating: Voltage : 12V AC/DC max., 2V DC min. Current: 10mA AC/DC max., 10μA DC min.
 - 2. Contact Resistance : 200mΩ Max
 - 3. Insulation Resistance : 100MΩ at 100V
 - 4. Withstand Voltage : AC100V(50-60Hz) for 1 minute
 - 5. Bounce Time: ≤5msec (at 16 in./sec. actuation speed)
 - 6. Operation Force : 60±10gf (40-85gf for total travel)
 - 7. Pretravel: 1.6±0.5mm
 - 8. Total travel: 3.6±0.3mm
 - 9. Operating Life : 50,000,000 Cycles

Click Tactile feel



ITEM	PART NAME	TER NO.	QTY.	MATERIAL	FINISHING	REMARK
⑧	Follower		1	POM		Nature
⑦	Moving contact		1	Silver Alloy		
⑥	Fixing contact		1	Silver Alloy		
⑤	Spring		1	Stainless Steel		
④	LED		1	See led spec		R.G.B full color
③	Keystroke		1	POM		Nature
②	Cover		1	Nylon		Nature
①	Base		1	Nylon		Black

APPROVALS	DATE
DRAWN Chenjun	2015-8-14

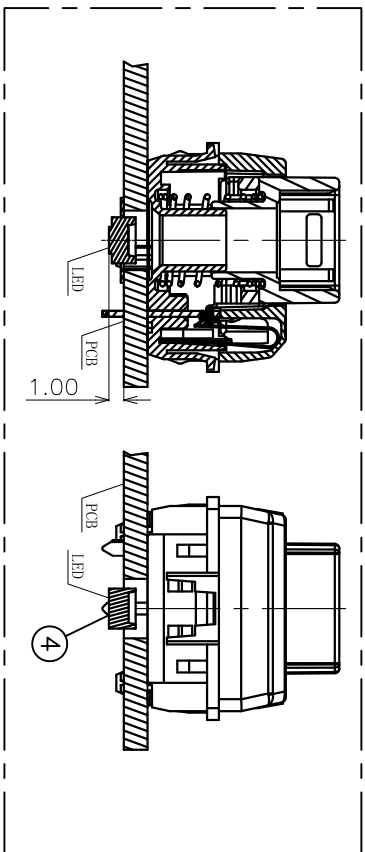
DONGGUAN CITY KAIHUA ELECTRONICS CO.,LTD
 Kaifu

CHECKED	TITLE:
APPROVALS	PG1593 KeySwitches with SMD LED

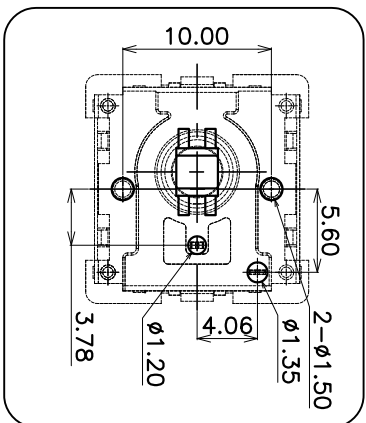
APPROVALS	PART NO.	SCALE:	PROJ.
CHECKED	PG159301S03	1:1	1

TOLERANCES ARE	ANGLE	UNITS:	DRAWING NO.	SHEET
30°±1	±0.30	mm	KH-PG1593-003EN	1 OF 1
10°±0.30	±0.20			
5°±0.15	±0.10			

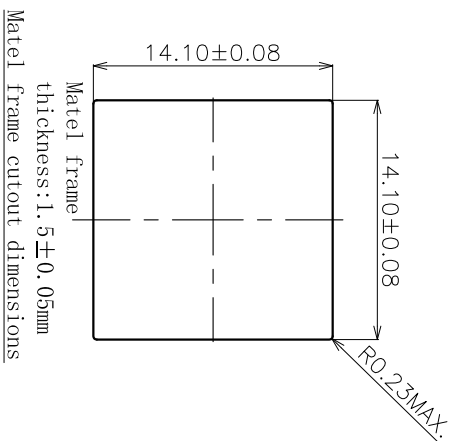
ECN NO.	REV.	DATE:	DESCRIPTION.	CHANGE:	CHECK.	APPRO.
	A		NEW			



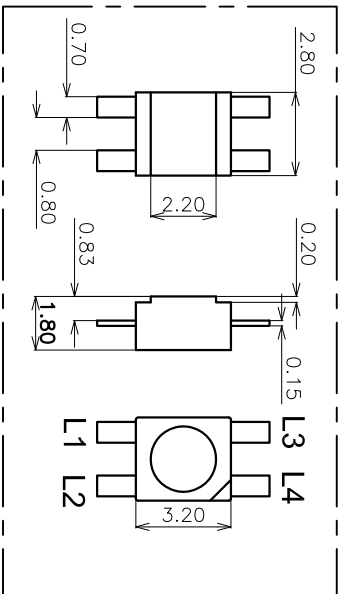
LED Assembly Drawing



PCB Layout (Pattern Side)



Metal frame cutout dimensions



SMD LED Drawing
SCALE: 2:1

■ R.G.B Full Color NO.(共阳)

Terminal No.	L1	L2	L3	L4
Colour				
Red		●		●
Green	●			●
Blue			●	●

APPROVALS		DATE
DRAWN	Chenjun	2015-8-14
CHECKED		
APPROVALS		

DONGGUAN CITY KAIHUA ELECTRONICS CO.,LTD
 Kaifu

ECN NO.	REV.	DATE.	DESCRIPTION.	CHANGE.	CHECK.	APPRO.	TOLERANCES ARE	ANGLE	PART NO.	SCALE: 1:1	PROJ.
	A		NEW				30°±1 10°≤∠≤30° ±0.30 5°≤∠≤10° ±0.20 L≤5 ±0.15	±2°	PG1593 KeySwitches with SMD LED	PG159301S03	1 OF 2